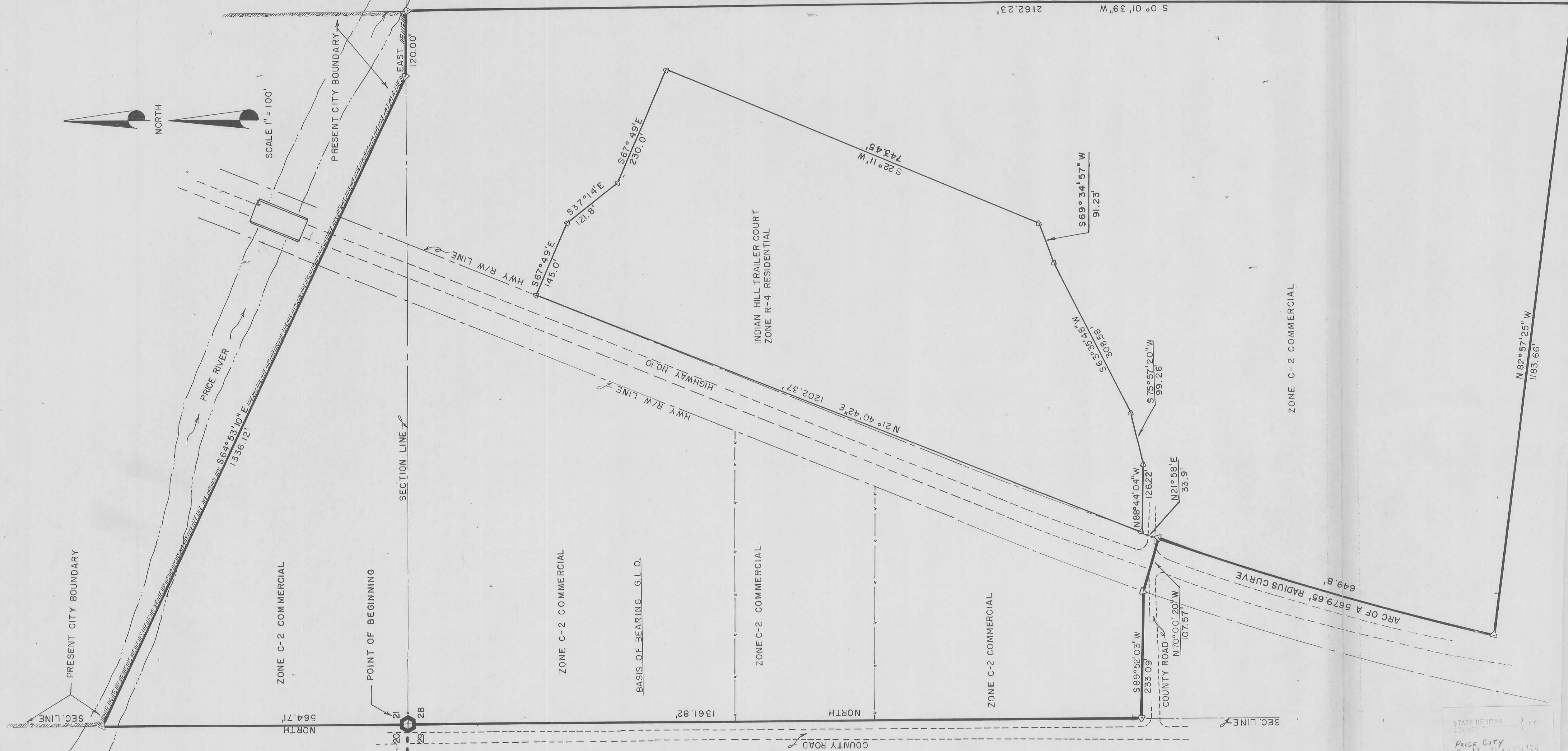


BUNNELL ANNEX

143



E. S.L.B. & M.

REGISTERED
AS PRESCRIBED
TRACT OF LAND

I, SAID POINT ALSO
SHIP 14 SOUTH
N AND RUNNING
RY, SAID POINT ALSO
E, 1336.1 FT. ALONG
ONG SECTION LINE
LINE; THENCE
RY LINE AND RUNNING
FT. TO HIGHWAY NO.
ALONG THE ARC OF
NT AT WHICH TANGENT
7.0 FT. BEARING
/ LINE OF SAID
ONG COUNTY ROAD
RTH, 1361.8 FT.
N) R/W OF COUNTY
ACRES

[Signature]
L.S.

ED BY THIS
ACE WITH

CEPTANCE

OF SEPTEMBER 1975
AND ACCEPTED

[Signature]

STATE OF UTAH
COUNTY OF PRICE CITY
PRICE CITY
SEP 11 3 12 PM '75
BOOK 3 PLATS
PAGE 143
COUNTY

Copy No. 134290
Checked
Accepted
Date